

X @EnergyMiningCM

in Energy Transition, Critical Minerals & Mining Investment Summits

f Energy Transition, Critical Minerals & Mining Investment Summits

▶ Energy Transition, Critical Minerals & Mining Invmt

# CRITICAL MINERALS AUSTRALIA

---

## CONFERENCE & EXHIBITION

### EVENT GUIDE

20 - 21 May 2026

Parmelia Hilton Perth

Perth, WA, Australia

[www.criticalmineralsaustralia.com](http://www.criticalmineralsaustralia.com)

Organiser

SPIRE EVENTS

Supporter

CRITICAL  
MINERALS  
ASSOCIATION

Your Global Mining Authority

Scan below for the programme



Day 1



Day 2

# WELCOME



Dear Attendees,

Welcome to the 5th edition of **Critical Minerals Australia Conference and Exhibition!** We are honoured that you can join us here at this premier international event dedicated to critical minerals, mining and commodities in Perth, WA, Australia.

Similar to other major global powers, Australia has been actively seeking partnerships in the area of critical minerals. Most recently in May during the state visit by Japan's prime minister, Australia and Japan agreed to provide A\$1.67 billion in support for the sector, focusing on strategic projects to address the most urgent supply chain vulnerabilities in mining, refining and manufacturing in the two countries.

On a state level, Western Australia's (WA) mining sector continues to ensure operating surplus for the government. Its contribution to the state government amounted to \$11.2-billion in the 2026 financial year, forming the backbone of a \$3.5 billion operating surplus and helped fund \$1-billion in new cost-of-living relief for West Australians. It is thus fitting to hold this strategic Critical Minerals Australia event in Perth, the mining and resources hub of WA and Australia.

At Critical Minerals Australia Conference, we seek to share knowledge, facilitate important conversations and help mining and energy industry stakeholders stay abreast of the latest domestic and global geopolitical, economic and technological developments. We hope you can build on this diversity of attendees from Australia and beyond to make excellent connections and forge new business opportunities.

This event in Perth is part of our global Energy Transition, Critical Minerals and Mining Investment Conference Series. To date, this Conference Series have been held in Singapore, Japan, India, Australia, UK, United Arab Emirates, Canada and USA. We also organise MiningTech Conferences in Vancouver, Canada and Sao Paulo, Brazil. Globally, our events cover Africa, Australia, Asia, Latin and North America and Europe. To find out more, you can speak to us or browse at our website [www.spire-events.com](http://www.spire-events.com).

In closing, we hope you will have a great Critical Minerals Australia Conference and Exhibition experience ahead.

Yours sincerely,  
Daniel Radziszewski  
Director, Spire Events

## Contact our Team

### DANIEL RADZISZEWSKI

Director

Phone: + 65 96491062

Email: [daniel.radz@spire-events.com](mailto:daniel.radz@spire-events.com)



### NG CHIN CHYE

Director, Marketing & Public Relations

Phone: +65 91276642

Email: [chinchye.ng@spire-events.com](mailto:chinchye.ng@spire-events.com)



# SPONSORS & EXHIBITORS

## BRONZE SPONSOR

---



**Anson Resources Limited** is an Australian exploration company whose primary focus is the development of the Paradox Brine Project, Utah, USA. This is a unique lithium brine project fed by natural aquifers that sits on a known brine basin (Paradox Basin, Grand County, Utah) where lithium concentrations of up to 500 ppm have been measured.

Website: [www.ansonresources.com](http://www.ansonresources.com)

Email: [info@ansonresources.com](mailto:info@ansonresources.com) | Telephone: +61 7 3132 7990

## COMPANY SHOWCASE & EXHIBITOR

---



**Andromeda**

**Andromeda Metals Limited ('Andromeda')** is a fast-growing South Australian company with a vision to lead the world in the sustainable supply of superior quality industrial minerals and advancement of nanotechnologies. Its Great White Project (GWP) contains several high-value deposits containing a naturally occurring blend of halloysite tubes and kaolinite plates.

Website: [www.andromet.com.au](http://www.andromet.com.au)

Email: [info@andromet.com.au](mailto:info@andromet.com.au) | Telephone: +61 8 7089 9800

## DESTINATION SPONSOR

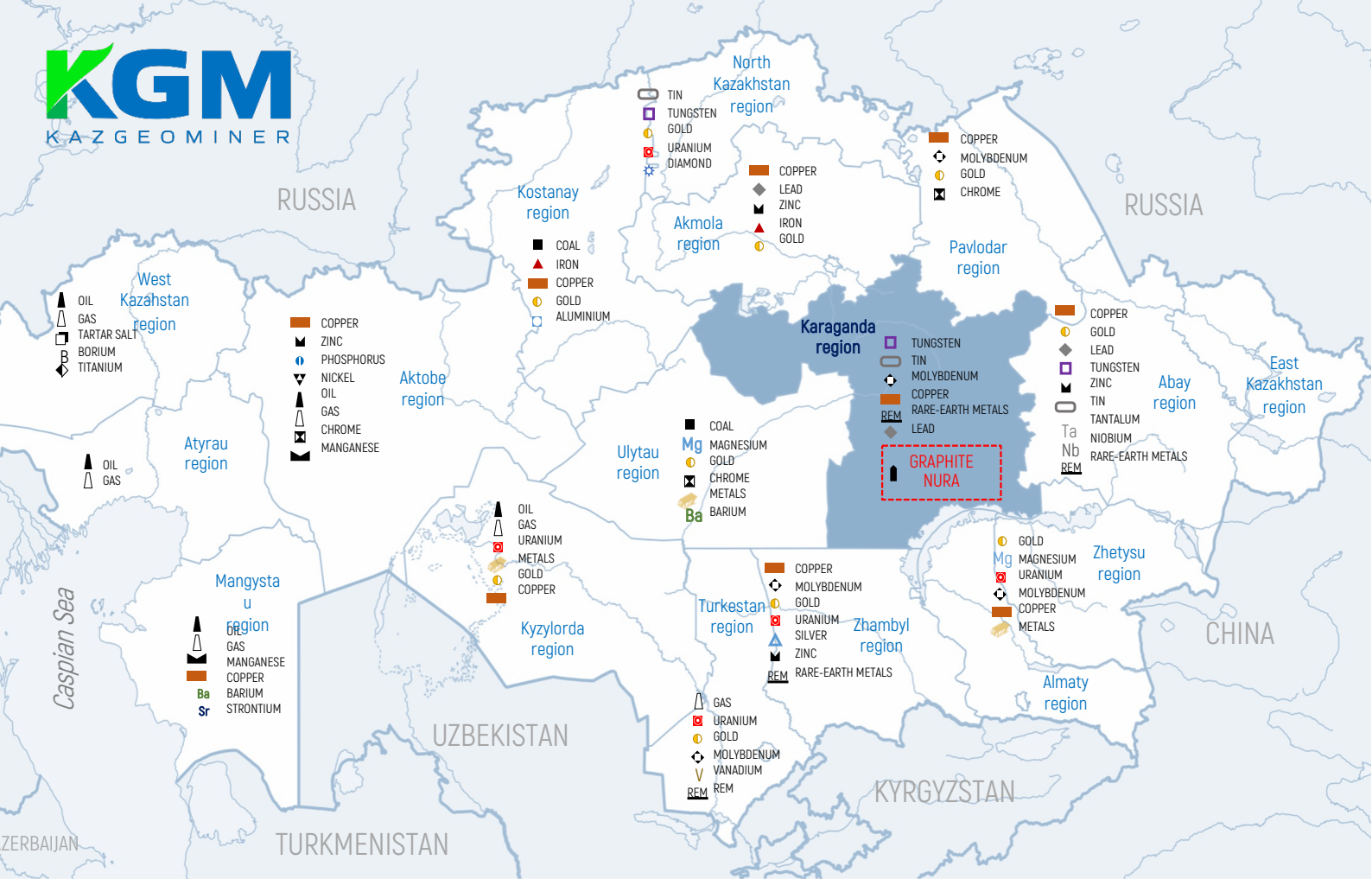
---

WESTERN AUSTRALIA | BUSINESS EVENTS PERTH

**Business Events Perth** is chartered to market Perth and Western Australia to national and international health, academic, professional, arts and cultural not-for-profit organisations with the intent of securing their high value association events.

Website: [www.businesseventspertth.com](http://www.businesseventspertth.com)

Email: [info@bepertth.com](mailto:info@bepertth.com) | Telephone: +61 8 9218 2900





**Infrastructure:** A national highway (R-36) runs 45 km west of the site. A paved local road (R-181, Aksu-Ayuly-Aktogay) passes 6 km north of the site. The nearest railway station is 110 km away. Electricity and water supply can be provided from local sources. The logistics allow for a transition to industrial-scale operations without capital-intensive investments.

**Existing facilities:**

- The nearest mining enterprise is the Almalinsky mine for copper and gold-bearing ores (25 km north);
- The Sarytogambay site (Sarytogan Graphite Limited) is located 10 km northeast of the Nura site.

 **License Area:**  
13.67 km<sup>2</sup>

 **Additionally** we have access to further prospective license areas, which allows for future resource expansion and long-term supply scalability.

 **Mineral resources:** P3 category - 100 mln.tonnes of ore, containing approximately 40 thous.tonnes of graphite, with an average grade of 40%

 **Strategy:**  
Exploration → Processing → Downstream (graphite/graphene)

**KazGeoMiner LLP**

**Our Contacts:**  
Zhalimbetov Askhat – CEO  
Baimuldinova Nazira – Project Manager

**E-mail:** mining.kz2021@gmail.com  
holart.kz@gmail.com  
**Mob.:** + 7 775 85 88 387



## EXHIBITORS

### CRITICAL MINERALS ASSOCIATION

Your Global Mining Authority

**Critical Minerals Association** aims to be at the forefront in championing the critical minerals cause in the government, private and NGO sectors. Operating from our base in Asia Pacific, we believe in the growth potential of critical minerals particularly in this region and promoting its importance via our global members, stakeholders and the general public.

Website: [www.criticalmineralsassociation.com](http://www.criticalmineralsassociation.com)

Email: [info@criticalmineralsassociation.com](mailto:info@criticalmineralsassociation.com)

### METTLER TOLEDO

**Mettler Toledo's** vehicle business specialises in delivering robust and precise measurement solutions tailored for the transportation, logistics, and heavy machinery industries. Our advanced systems enhance operational efficiency, ensure accurate load management, and support safety and regulatory compliance.

Website: [www.mt.com/au/en](http://www.mt.com/au/en)

Telephone: +61 1300 659 761

## UPCOMING EVENTS

### MINING CRITICAL MINERALS MIDDLE EAST CONFERENCE & EXPO

Held from 12-13 May 2025 under the patronage of the Ministry of Energy and Infrastructure, United Arab Emirates (UAE), it was the first event in the UAE dedicated to critical minerals. HE Saif Ghubash, Assistant Undersecretary for Petroleum, Gas & Mineral Resources Sector, Ministry of Energy & Infrastructure, delivered the opening keynote address. Together with the Ministry of Energy & Infrastructure, we welcome you to Dubai from 16-17 Sep 2026 for the 2<sup>nd</sup> edition.

 [www.miningcriticalminerals.com](http://www.miningcriticalminerals.com)



Scan below for the 2025 event highlights video



# OUR EVENT SPOTLIGHTS

## MININGTECH NORTH AMERICA EXPO

Held from 20-21 November 2025 in Vancouver, it is the largest annual event in the province of British Columbia, Canada dedicated to technology, AI & digital innovation in mining. Councillor Sarah Kirby Yung, Deputy Mayor of Vancouver welcomed 500+ attendees to this event. We look forward to welcoming you to Vancouver, BC once again from Nov 9-10 for the 2026 edition.

 [www.miningtechnorthamerica.com](http://www.miningtechnorthamerica.com)




Scan below for the 2025 event highlights video.



## CRITICALMINERALS NORTH AMERICA CONFERENCE & EXHIBITION

Held from 23-24 April 2026 in New York, United States, more than 250 attendees from USA, Canada, Australia, Asia and beyond converged in New York to seek new funding & business opportunities as well as highlight mining projects, technologies and services. We welcome you to join us in New York from 19-20 April 2027 for the 5<sup>th</sup> edition.

 [www.criticalmineralsnorthamerica.com](http://www.criticalmineralsnorthamerica.com)



Scan below for the 2026 event highlights video



# OUR GLOBAL OUTREACH



**Mining Asia  
Conference & Expo  
(23 - 24 June 2026)  
Singapore**



**Critical Minerals & Energy Transition  
Conference & Exhibition  
(11 August 2026)  
Sydney, NSW, Australia**



**Critical Minerals Japan  
Conference & Exhibition  
(8 - 9 September 2026)  
Tokyo, Japan**



**Mining & Critical Minerals Middle East  
Conference & Expo  
(16 - 17 September 2026)  
Dubai, United Arab Emirates**

## SNAPSHOT OF OUR SELECTED UPCOMING EVENTS



Scan here for our  
full 2026/2027  
events calendar



**MiningTech South America  
Conference & Exhibition  
(1 - 2 October 2026)  
São Paulo, Brazil**



**Mining & Critical Minerals Europe  
Conference & Exhibition  
(20 - 21 October 2026)  
London, United Kingdom**



**MiningTech North America  
Conference & Expo  
(9-10 November 2026)  
Vancouver, BC, Canada**



**Botswana Mining & Energy (BME)  
Conference & Expo  
(22 - 23 March 2027)  
Gaborone, Botswana**

# SPONSORS, EXHIBITORS & PARTNERS

## BRONZE SPONSOR



## COMPANY SHOWCASE & EXHIBITOR



Andromeda

## DESTINATION SPONSOR

WESTERN AUSTRALIA | BUSINESS EVENTS PERTH

## EXHIBITORS

CRITICAL  
MINERALS  
ASSOCIATION

Your Global Mining Authority

**METTLER TOLEDO**

## PARTNERS



PR Newswire®



RESOURCEWORLD  
INVESTMENT OPPORTUNITIES AND NEWS MAGAZINE

Worldoils

[WWW.CRITICALMINERALS AUSTRALIA.COM](http://WWW.CRITICALMINERALS AUSTRALIA.COM)